

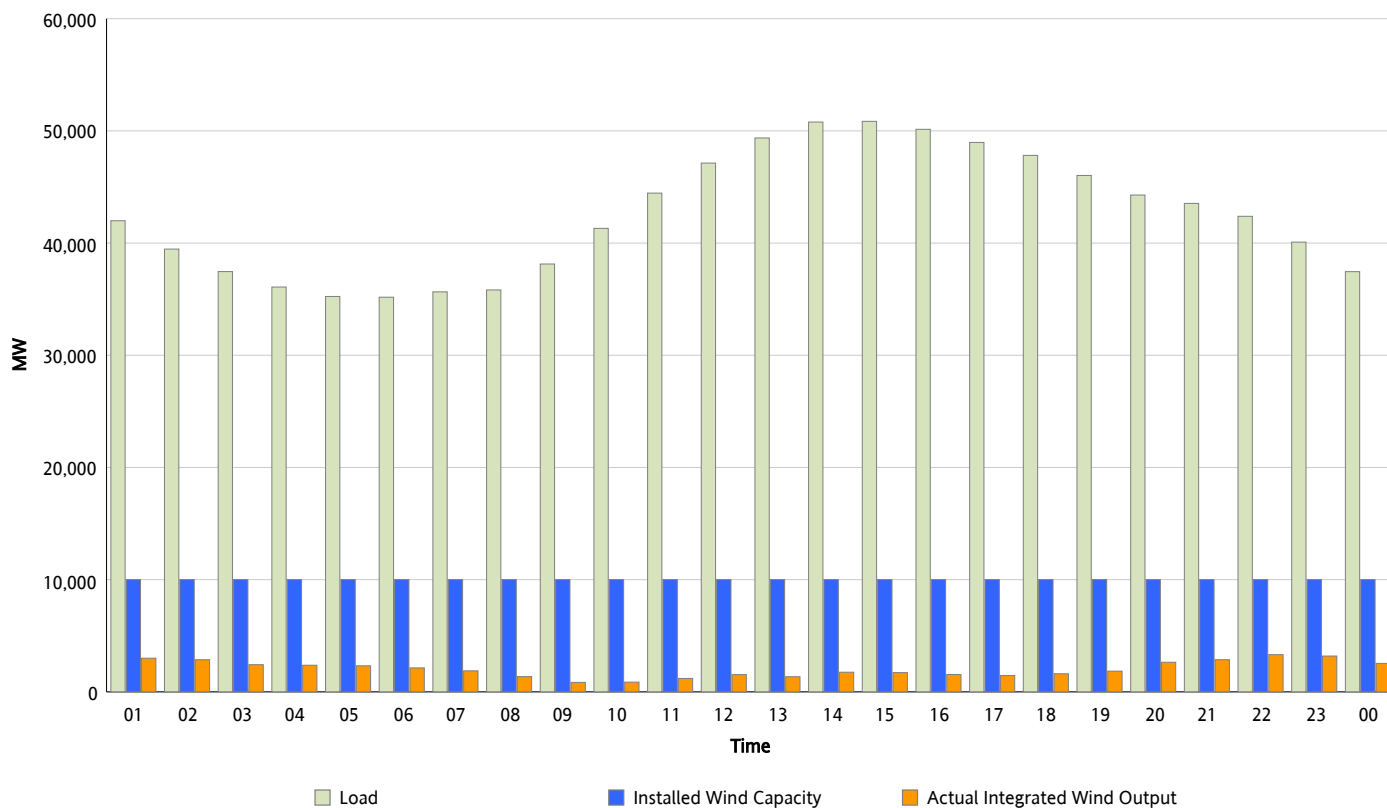


## ERCOT Grid Operations

### Wind Integration Report : 08/18/2012

Peak Load	50,849 MW
Load Peak Hour (HE)	15
Wind Over Peak	1,715 MW
Wind Record 06/19/12	8,368 MW
Max Wind Value*	3,738 MW
Wind Peak Time	21:56
Wind Integration %	9 %

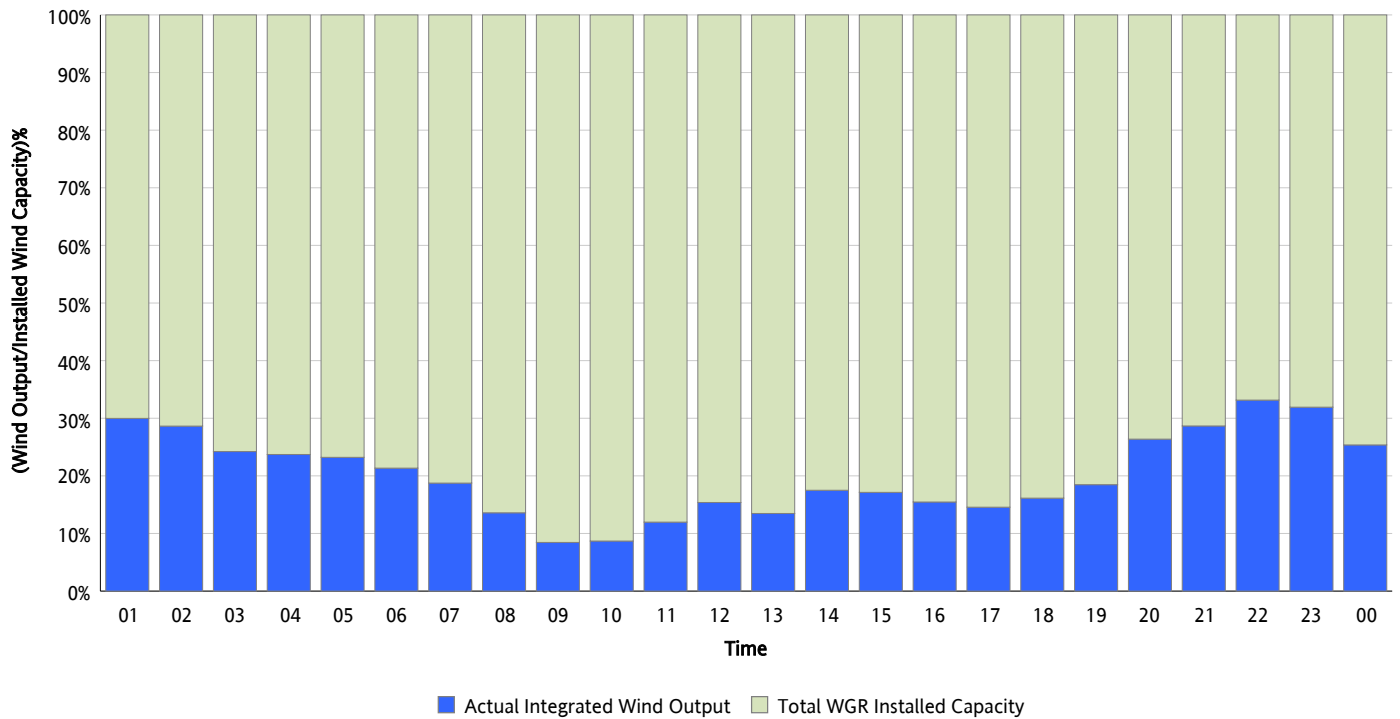
**Hourly Average Actual Load vs. Actual Wind Output**  
**08/18/2012**



\* Wind Record and Wind Max represent instantaneous values and the rest of the values are integrated over the hour

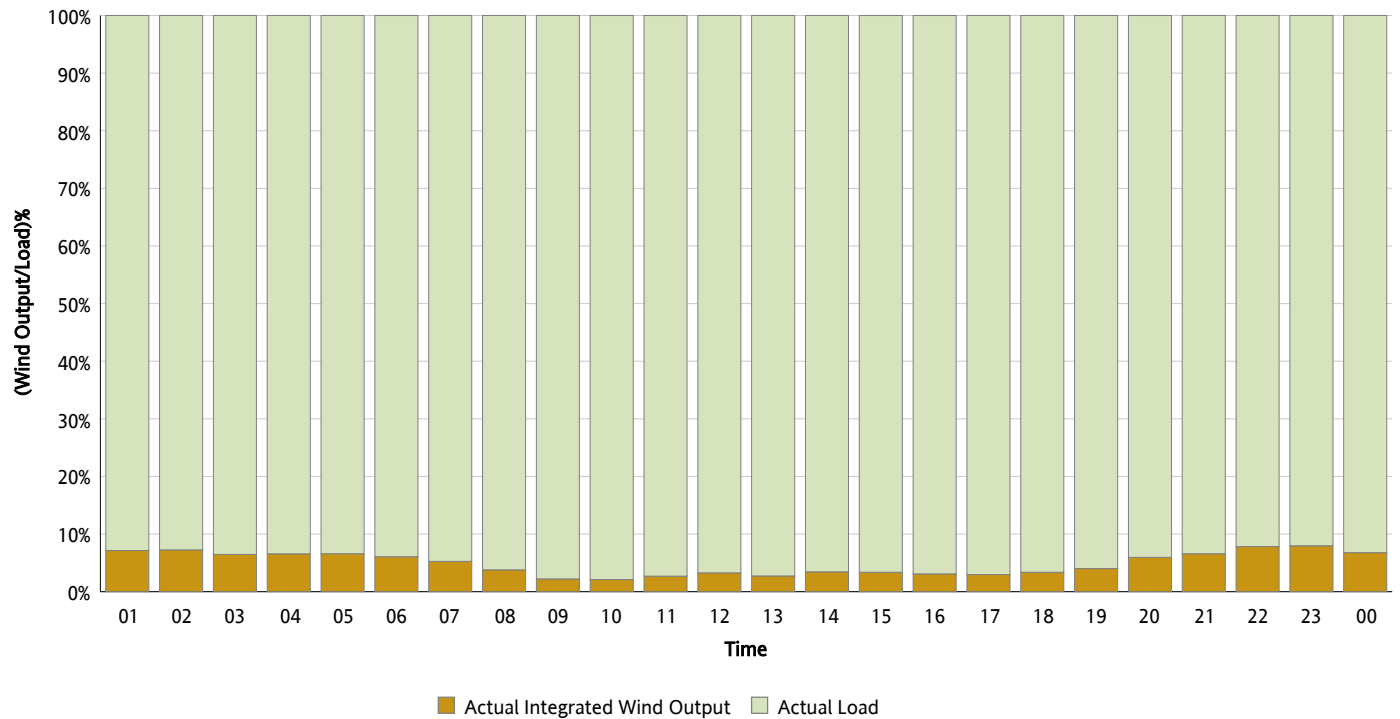
## Actual Wind Output as a Percentage of the Total Installed Wind Capacity

08/18/2012



## Actual Wind Output as a Percentage of the ERCOT Load

08/18/2012



## ERCOT Load vs. Actual Wind Output

08/11/2012 - 08/18/2012

